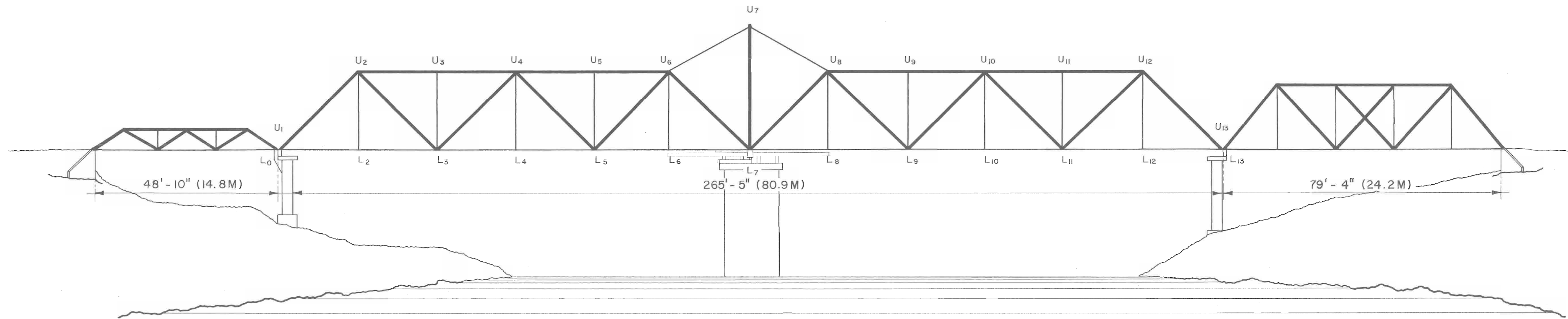


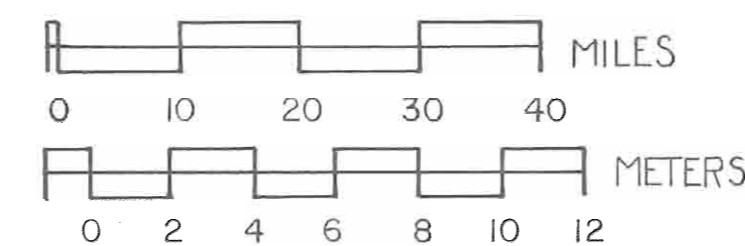
JUDSONIA BRIDGE • 1923

JUDSONIA, ARKANSAS



EAST ELEVATION

SCALE IN FEET: 1/16" = 1' - 0"



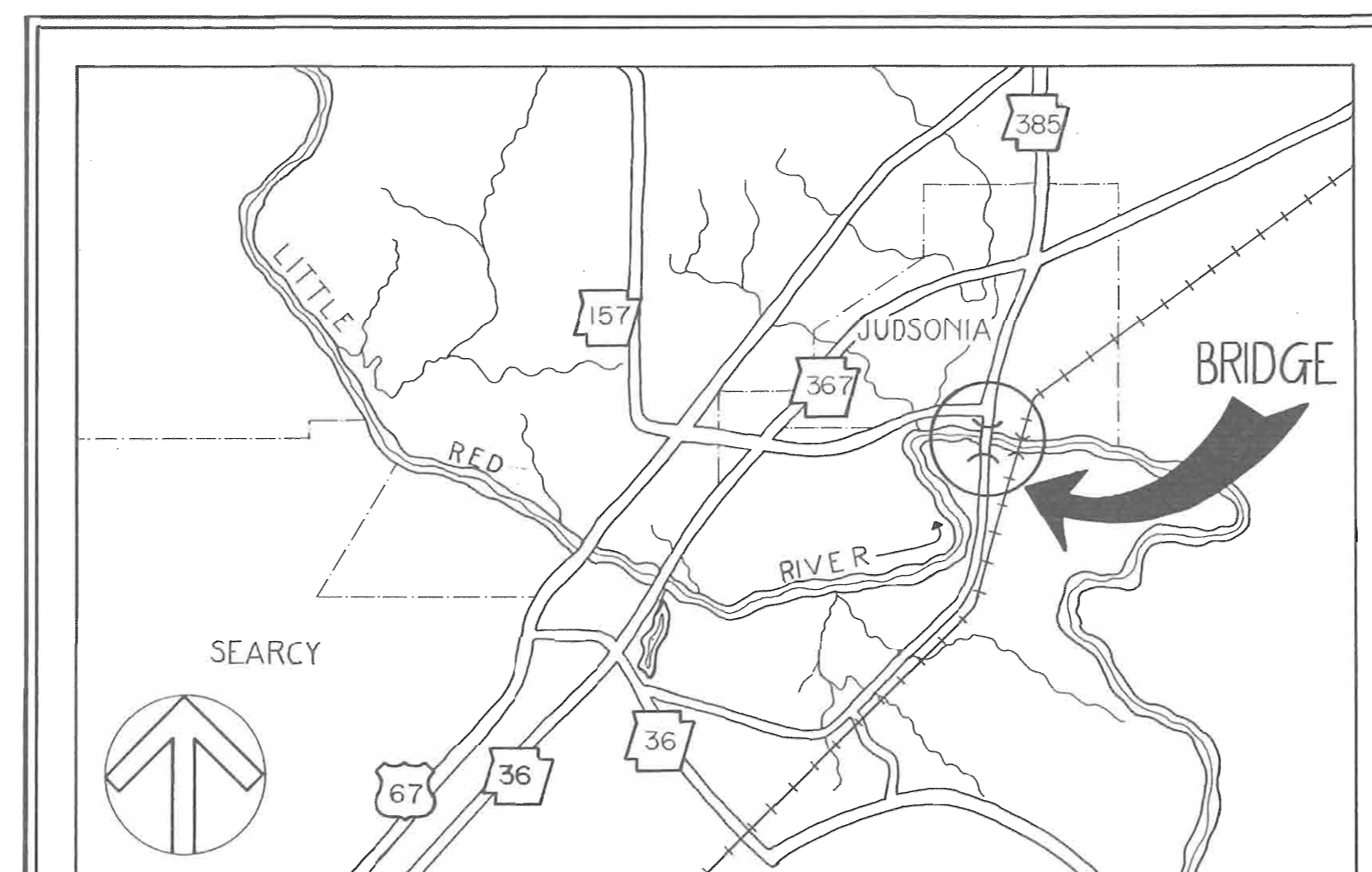
THE JUDSONIA BRIDGE, COMPLETED IN 1924, IS SIGNIFICANT AS THE ONLY KNOWN CENTER-BEARING SWING BRIDGE IN THE STATE OF ARKANSAS THE R.L. GASTER CONSTRUCTION COMPANY OF LITTLE ROCK ERECTED THE 265-FOOT MAIN SPAN, WHILE THE RESIDENTS OF JUDSONIA DISPLAYED COMMUNITY SPIRIT IN DONATING TIME AND MONEY TO THE APPROACHES.

THE BRIDGE WAS CONSTRUCTED AS PART OF A NATIONAL MODERNIZING MOVEMENT TO IMPROVE ROADS, GIVING THE TOWN OF JUDSONIA ACCESS TO OUTLYING REGIONS ON THE OPPOSITE SIDE OF THE RIVER.

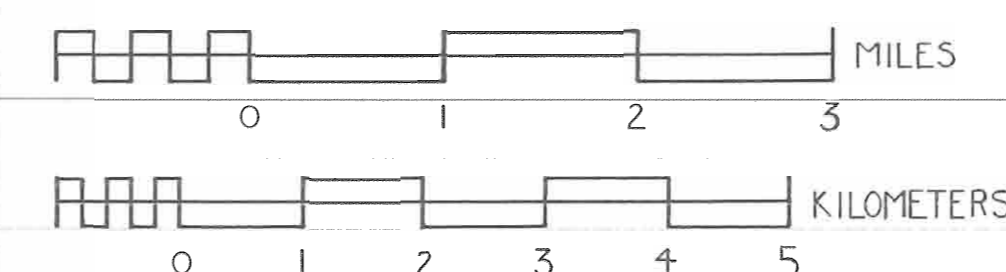
AS STEAMBOATS CAME UP THE LITTLE RED RIVER, THE BRIDGE'S TURN MECHANISM WAS OPERATED BY ONE PERSON IN THE CENTER OF THE BRIDGE USING A KEY OR LEVER THAT FIT DIRECTLY INTO THE GEARS. THE PEAK AT THE TOP OF THE BRIDGE STRUCTURALLY AIDED IN CENTERING THE WEIGHT OVER THE CENTER PIVOT AND IN SUPPORTING THE ENDS WHEN THE BRIDGE WAS OPEN.

THE BRIDGE CEASED TO TURN IN THE LATE 1920'S AS NAVIGATION ON THE LITTLE RED RIVER DIMINISHED

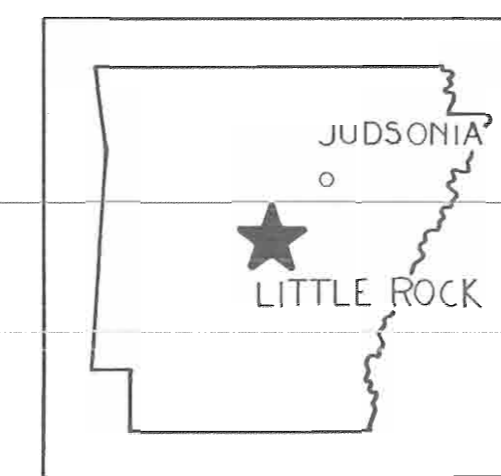
THE JUDSONIA BRIDGE WAS DOCUMENTED DURING THE SUMMER OF 1988, AS PART OF THE ARKANSAS HISTORIC BRIDGE RECORDING



LOCATION MAPS



BASED ON A.S.H.D. MAP WHITE COUNTY #A 200-73 1979
UTM 15, 3903310, 623720

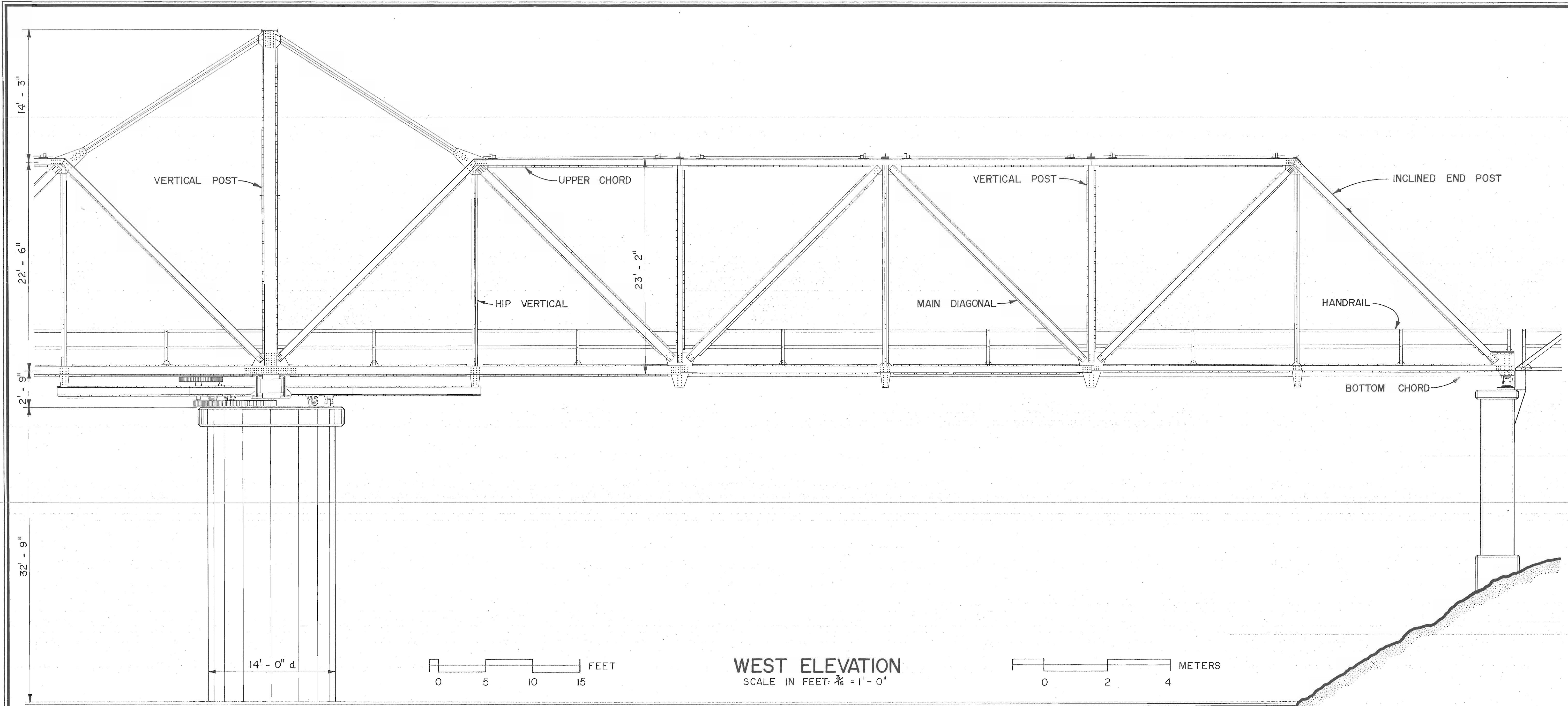


PROJECT, BY THE HISTORIC AMERICAN ENGINEERING RECORD (HAER), A LONG RANGE PROGRAM OF THE NATIONAL PARK SERVICE TO DOCUMENT HISTORICALLY SIGNIFICANT ENGINEERING AND INDUSTRIAL STRUCTURES IN THE UNITED STATES. THE ARKANSAS HISTORIC BRIDGE RECORDING PROJECT WAS CO-SPONSORED BY THE ARKANSAS HISTORIC PRESERVATION PROGRAM AND THE ARKANSAS HIGHWAY AND TRANSPORTATION DEPARTMENT.

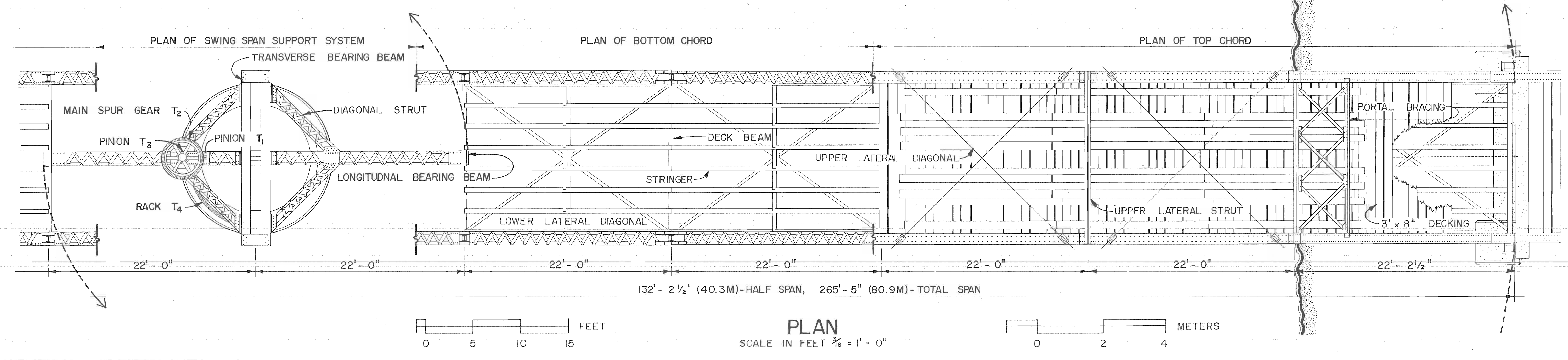
THE FIELD WORK, MEASURED DRAWINGS, HISTORICAL REPORTS, AND PHOTOGRAPHS WERE PREPARED UNDER THE DIRECTION OF ROBERT J. KAPSCH, CHIEF, HISTORIC AMERICAN BUILDINGS SURVEY / HISTORIC AMERICAN ENGINEERING RECORD, AND ERIC N. DE LONY CHIEF OF HAER. MICHAEL SWANDA, SURVEY COORDINATOR ARKANSAS HISTORIC PRESERVATION PROGRAM, AND BURNEY B. McCLURKAN, ARCHAEOLOGIST-HISTORIAN ENVIRONMENTAL DIVISION, ARKANSAS HIGHWAY AND TRANSPORTATION DEPARTMENT SERVED AS PROJECT ADVISORS.

THE RECORDING TEAM CONSISTED OF: LOLA BENNETT (UNIVERSITY OF VERMONT), PROJECT HISTORIAN, KATHRYN STEEN (LUTHER COLLEGE) AND SEAN O'REILLY (THE IRISH ARCHITECTURAL ARCHIVE, DUBLIN, IRELAND), HISTORIANS; ROBERT ARZOLA (TEXAS TECH UNIVERSITY), AND FINBAR GARVEY (UNIVERSITY COLLEGE, DUBLIN, IRELAND), ARCHITECTURAL DELINEATORS; CORINNE SMITH (CORNELL UNIVERSITY), ENGINEER; AND LOUISE TAFT (LITTLE ROCK, ARKANSAS), PHOTOGRAPHER.

TRIM LINE



WEST ELEVATION
SCALE IN FEET: $\frac{1}{8}'' = 1' - 0''$



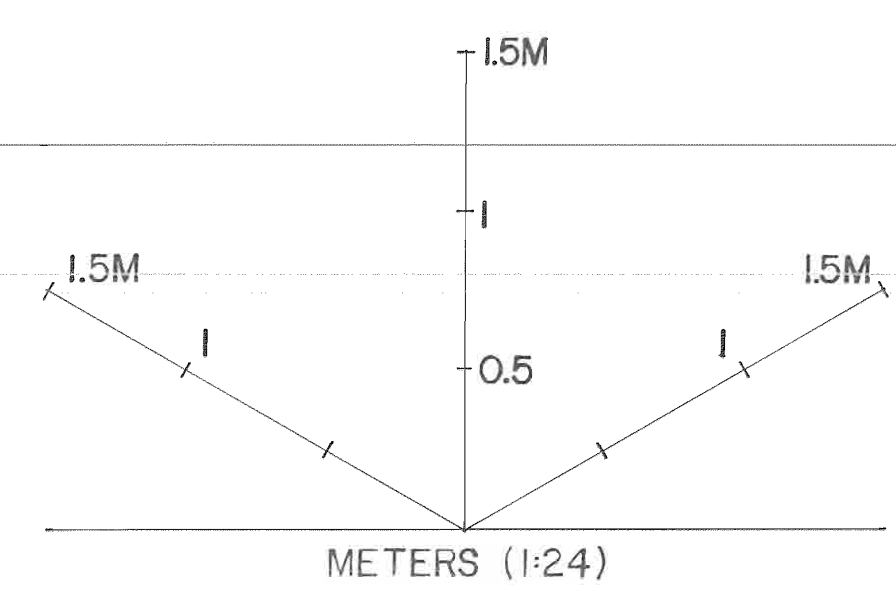
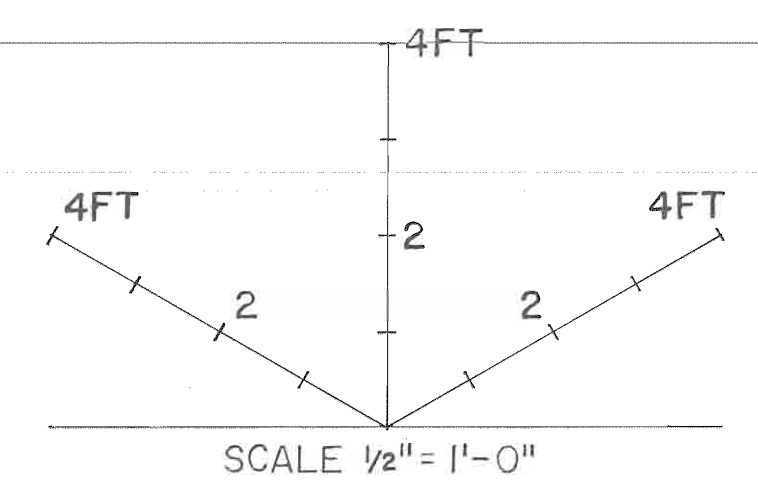
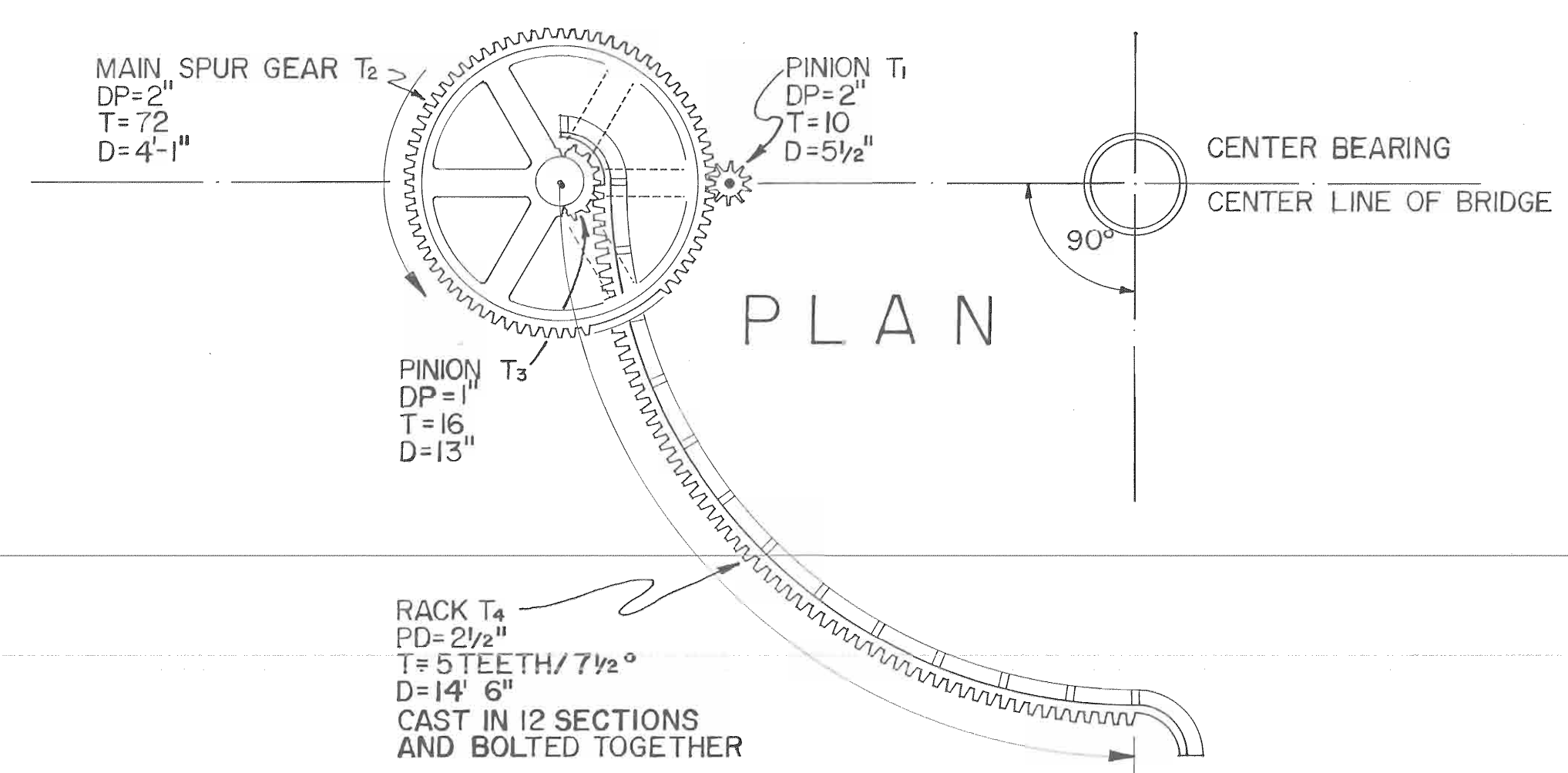
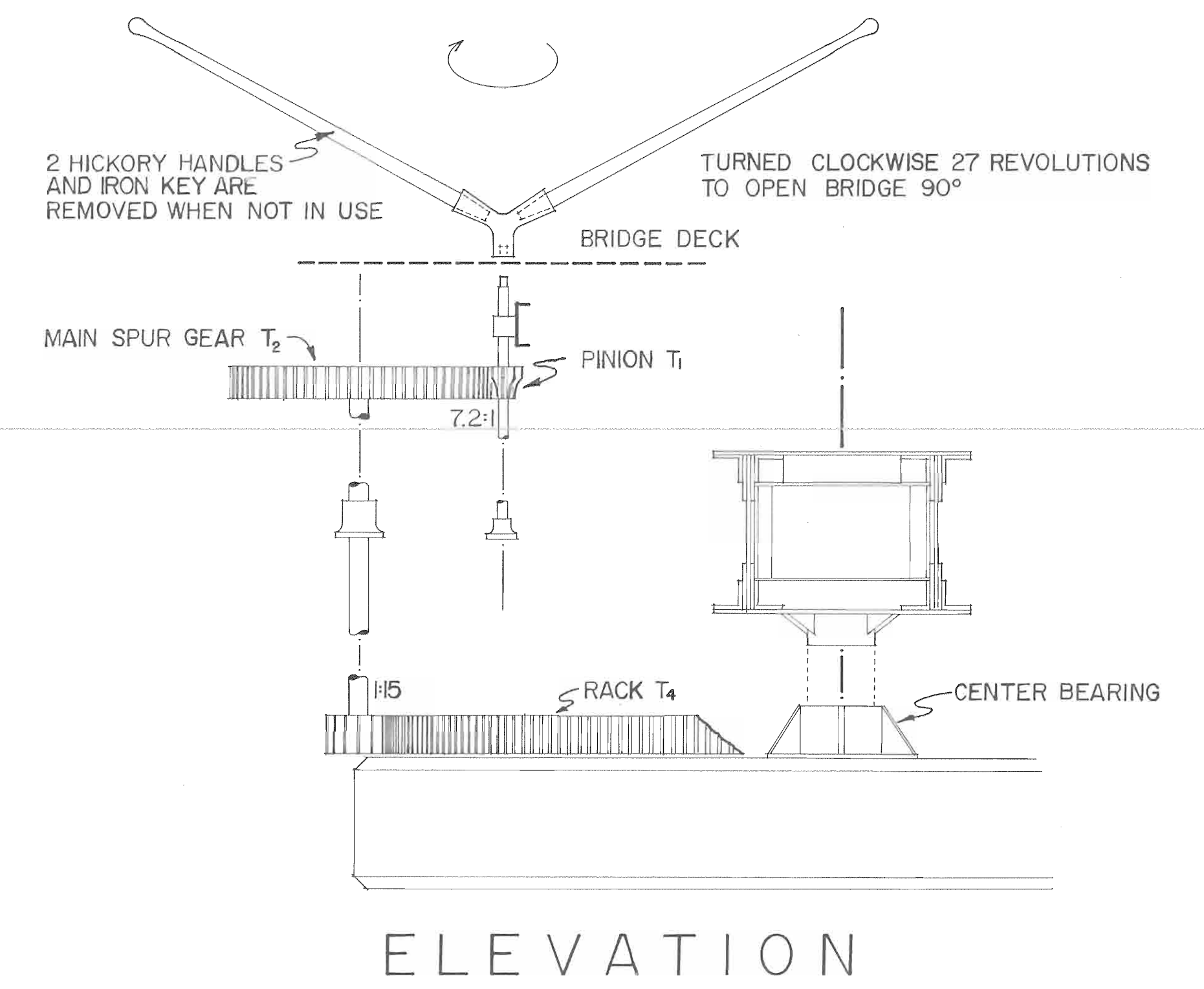
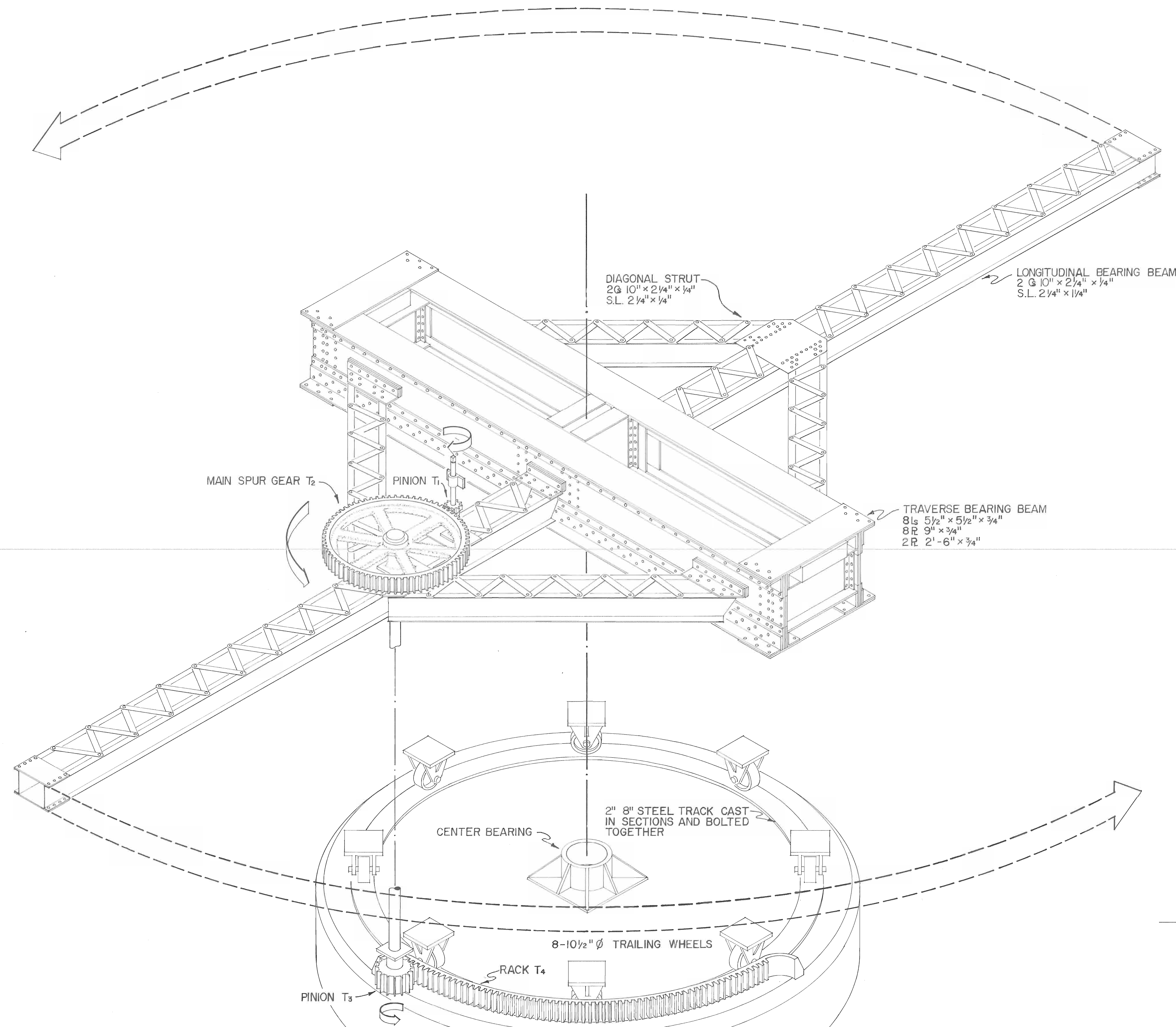
PLAN
SCALE IN FEET $\frac{1}{8}'' = 1' - 0''$

DELINEATED BY: ROBERT R. ARZOLA, 1988.
 ARKANSAS HISTORIC BRIDGE RECORDING TEAM
 HISTORIC NATIONAL PARK SERVICE
 UNITED STATES DEPARTMENT OF THE INTERIOR
 JUDSONIA
 IF REPRODUCED, PLEASE CREDIT: HISTORIC AMERICAN ENGINEERING RECORD, NATIONAL PARK SERVICE, NAME OF DELINEATOR, DATE OF THE DRAWING
 STATE HIGHWAY 385, SPANNING THE LITTLE RED RIVER
 WHITE COUNTY
 ARKANSAS
 SHEET 2 of 3
 HISTORIC AMERICAN ENGINEERING RECORD
 AR-51

TRIM LINE

TRIM LINE

ISOMETRIC of TURNING MECHANISM



DELINEATED BY: FINBAR GARVEY, 1988
 ARKANSAS HISTORIC BRIDGE RECORDING TEAM
 HISTORIC AMERICAN ENGINEERING RECORD
 UNITED STATES DEPARTMENT OF THE INTERIOR

JUDSONIA BRIDGE · 1923
 STATE HIGHWAY 385, SPANNING THE LITTLE RED RIVER
 WHITE COUNTY ARKANSAS

HISTORIC AMERICAN
 ENGINEERING RECORD
 AR-51
 SHEET
 3 of 3

IF REPRODUCED, PLEASE CREDIT: HISTORIC AMERICAN ENGINEERING RECORD, NATIONAL PARK SERVICE, NAME OF DELINEATOR, DATE OF THE DRAWING

TRIM LINE